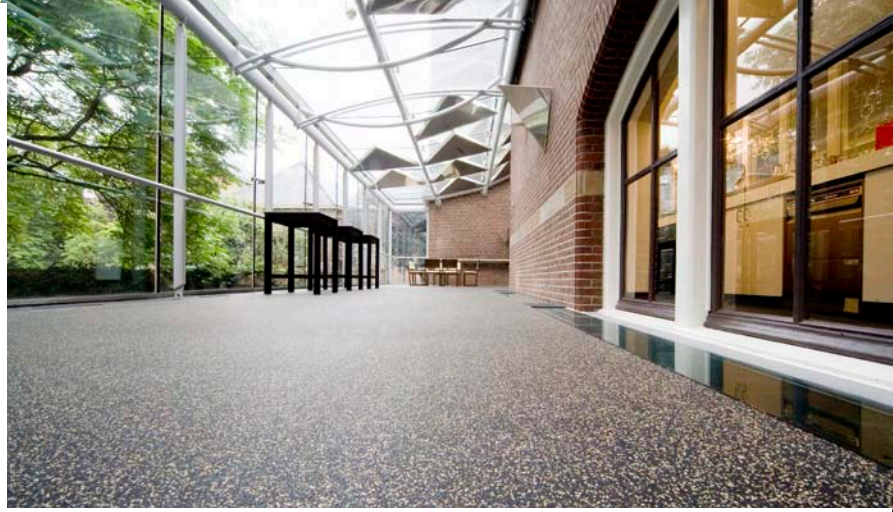


  
**REHOUSE**  
www.rehouse.com



GO GREEN

**Neoflex™**  
RESILIENT FLOORING

**Decoflex™**  
SPORTS FLOORING

 **Playflex**  
PLAYTILES

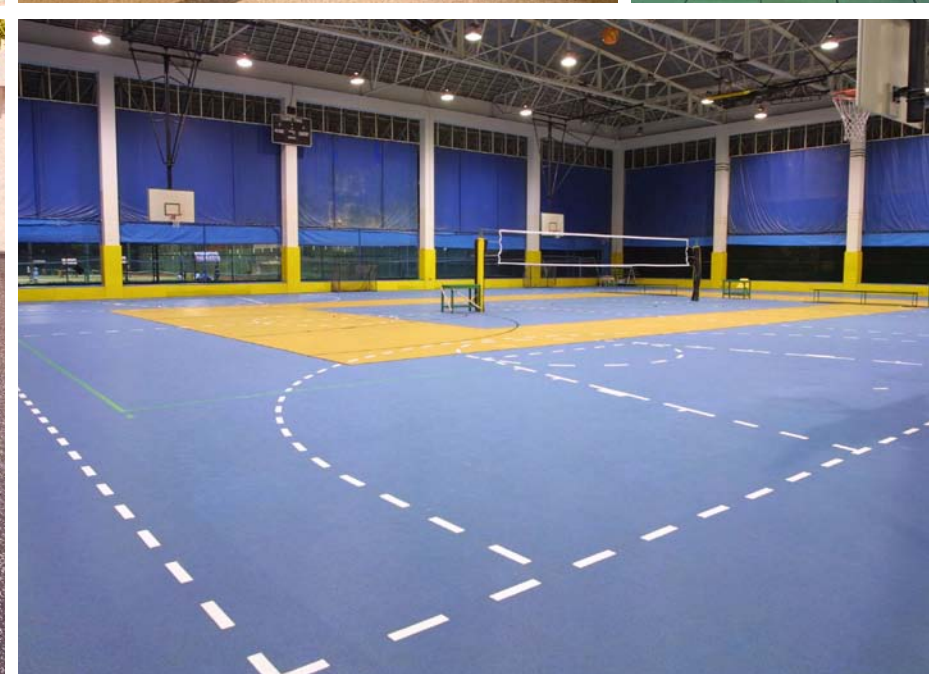
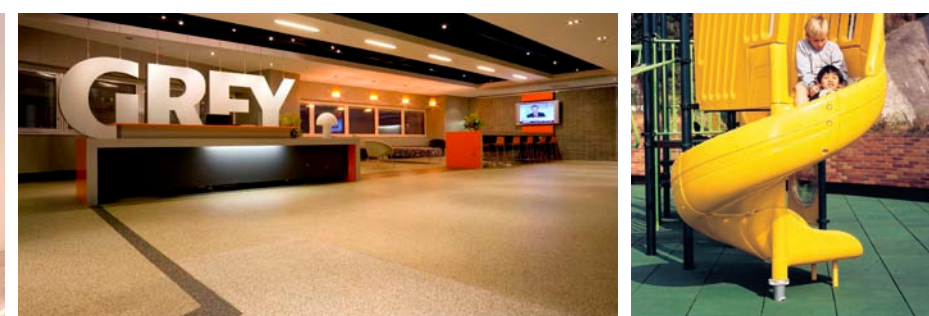
**Isodec™**  
UNDERLAY

Rehouse is independently accredited by 'Good Environmental Choice Australia' [GECA] - now you can be sure we meet stringent international standards for our environmental claims.



REP-2010  
GECA 25-2005-  
FLOOR COVERINGS





# REPHOUSE IS.

Rephouse's flooring products have been approved by "Good Environmental Choice Australia" (GECA). The GECA Ecolabel Program is the only whole-of-product-life, independent and scientifically based method to declare a product's environmental performance characteristics as well as a Company's good environmental practice.

The GECA Ecolabel Program has been developed for general compliance to ISO 14 024 and awards a mark of recognition for products and services that meet standards of environmental, quality and social performance. Meeting this program's requirements was Rephouse's way of providing an independent, scientifically credible confirmation of its environmentally preferable products.

The verification procedure is managed via a Documented Quality Management System and Certification Program Manuals which make comprehensive use of the ISO 14000 environmental management system as well as the auditing frame work of ISO 19011.

GECA's Ecolabel has been awarded for our Neoflex™, Playflex™, Decoflex™ and Isodec™ products which now meet or exceed their standards of environmental performance.

## APPROVED PRODUCTS

- Decoflex™ Universal Indoor Sports Flooring
- Decoflex™ Outdoor Sports Flooring
- Decoflex™ Softcourt Sports Flooring
- Neoflex™ Rubber Flooring – all Series
- Playflex™ Rubber Impact Absorbing Play Tiles
- Isodec™ Rubber and Rubber/Cork Underlay



REP-2010  
GECA 25-2005-  
FLOOR COVERINGS





For more information about our sustainability efforts, contact us:

**ASIA / MIDDLE EAST**

Rehouse Malaysia  
T: +60 3 6028 5388  
F: +60 3 6028 5688  
E: [info@rehouse.com](mailto:info@rehouse.com)

**AUSTRALIA**

Rehouse Australia  
T: +61 7 3281 0088  
F: +61 7 3281 0099  
E: [tony.newton@rehouse.com](mailto:tony.newton@rehouse.com)

[www.rehouse.com](http://www.rehouse.com)