

Neoflex™

RESILIENT FLOORING

Neoflex™ Duo Tiles

*FUNCTIONAL & AGILITY
FITNESS FLOORING FOR ATHLETES*

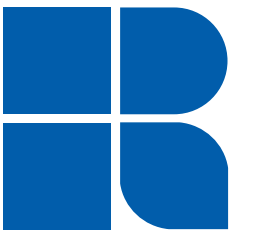
Fitness Flooring for Athletes.

Neoflex™ Duo Tiles

- An innovative, aesthetic, and superior quality, specific-purpose floor
- Optimum impact absorption and flexibility allows for higher levels of athleticism whilst reducing the risk of injuries
- Ideal for exercises that work on flexibility, core, balance, strength & power focusing on multiple movement planes
- Terrific surface choice for cardio areas, freestyle areas, functional and agility exercises, as well as Queenax and TRX activities



Neoflex Duo



REPHOUSE
www.rephouse.com

DUO TILE

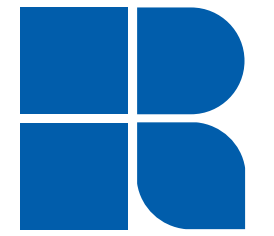
Durability, Usability and Flexibility.

Neoflex™ Duo Tiles

- Dual-durometer rubber tiles
- 1m x 1m in size
- 10 mm thick
- Available in 27 x exciting colors
- Product finish is dense, smooth and has an “orange-peel” like finish for good grip and excellent durability
- Logos, agility and functional zone markings can be in-laid in to the surface for maximum effectiveness and usability.



Neoflex Duo



REPHOUSE
www.rephouse.com

DUO TILE

27 Exciting Colors.

Neoflex™ Duo Tiles.



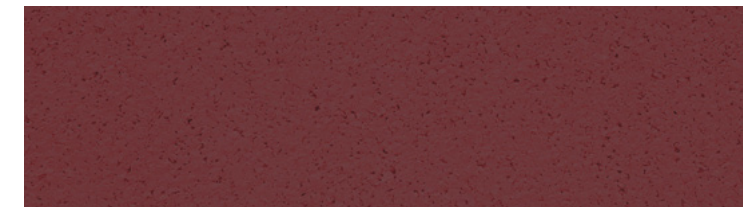
801 HD



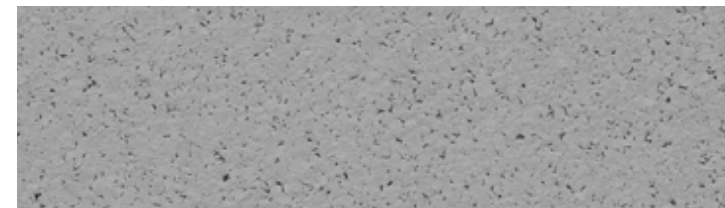
802 HD



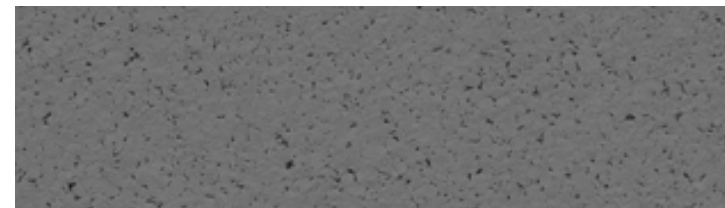
803 HD



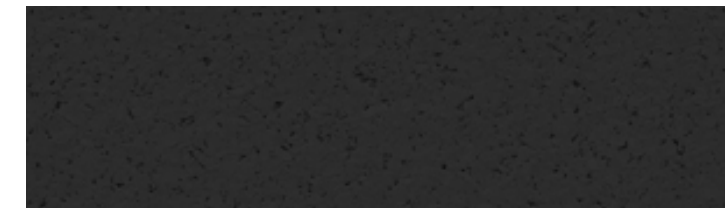
804 HD



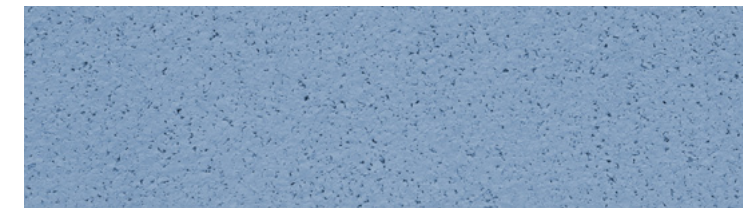
805 HD



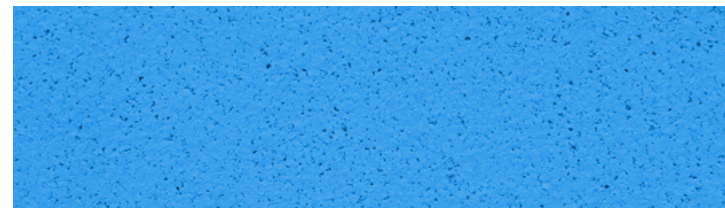
806 HD



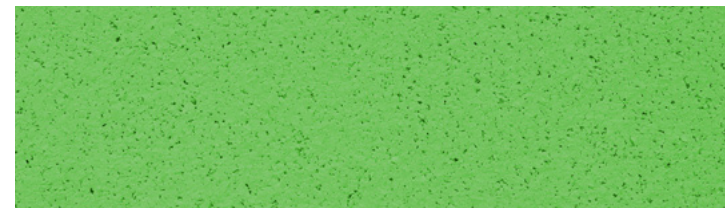
807 HD



808 HD



809 HD



810 HD



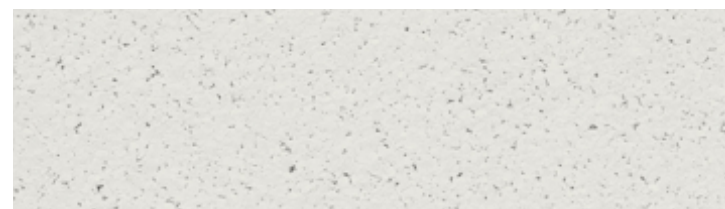
811 HD



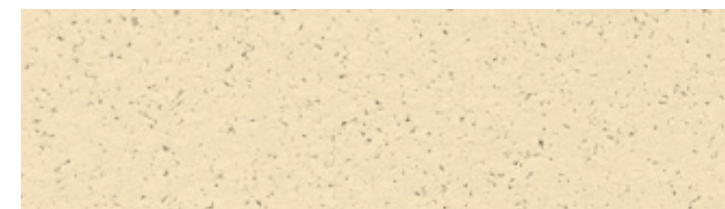
812 HD



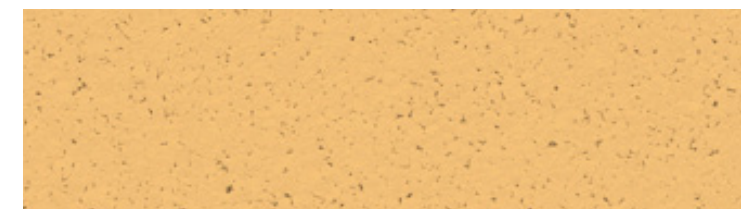
813 HD



814 HD



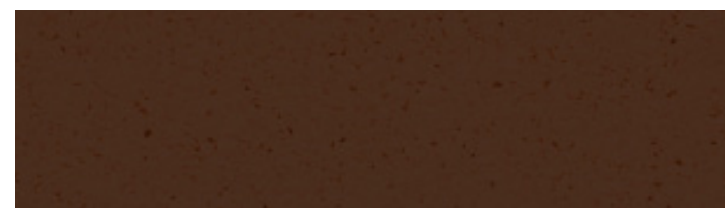
815 HD



816 HD



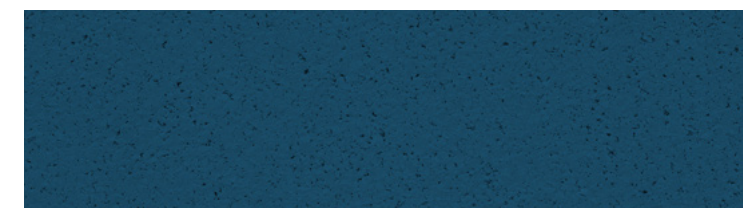
817 HD



818 HD



819 HD



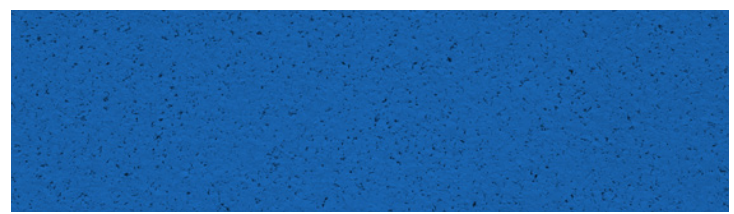
820 HD



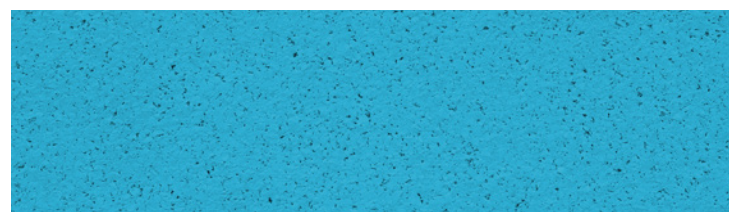
Neoflex™
RESILIENT FLOORING
Neoflex™ Duo



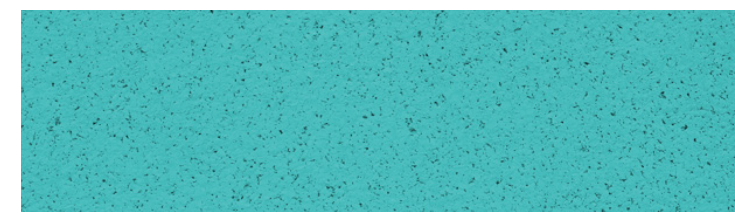
REPHOUSE
www.rephouse.com



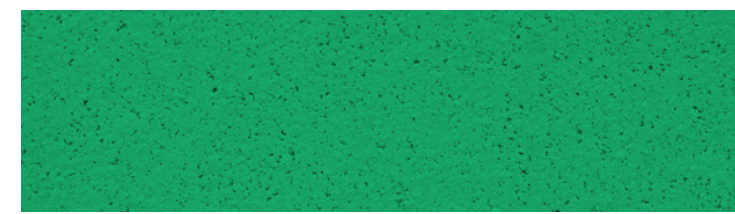
821 HD



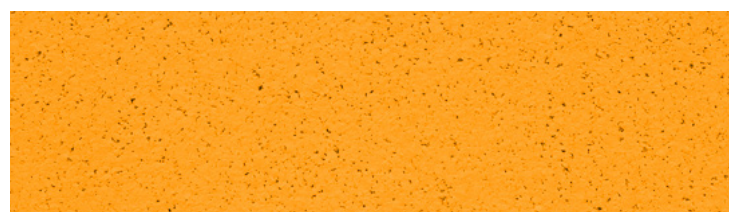
822 HD



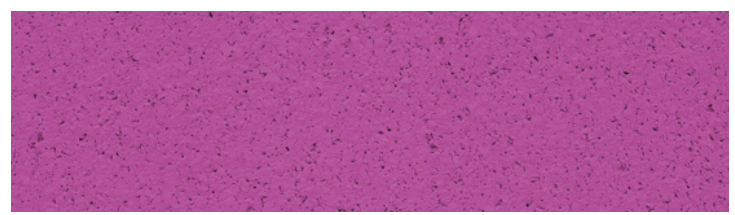
823 HD



824 HD



825 HD



826 HD



888 HD

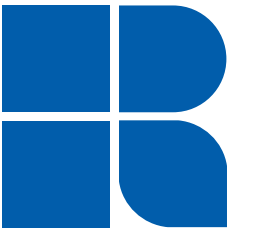


Neoflex™
RESILIENT FLOORING
Neoflex™ Duo

REHOUSE
www.rehouse.com

Neoflex™
RESILIENT FLOORING

Neoflex™ Duo



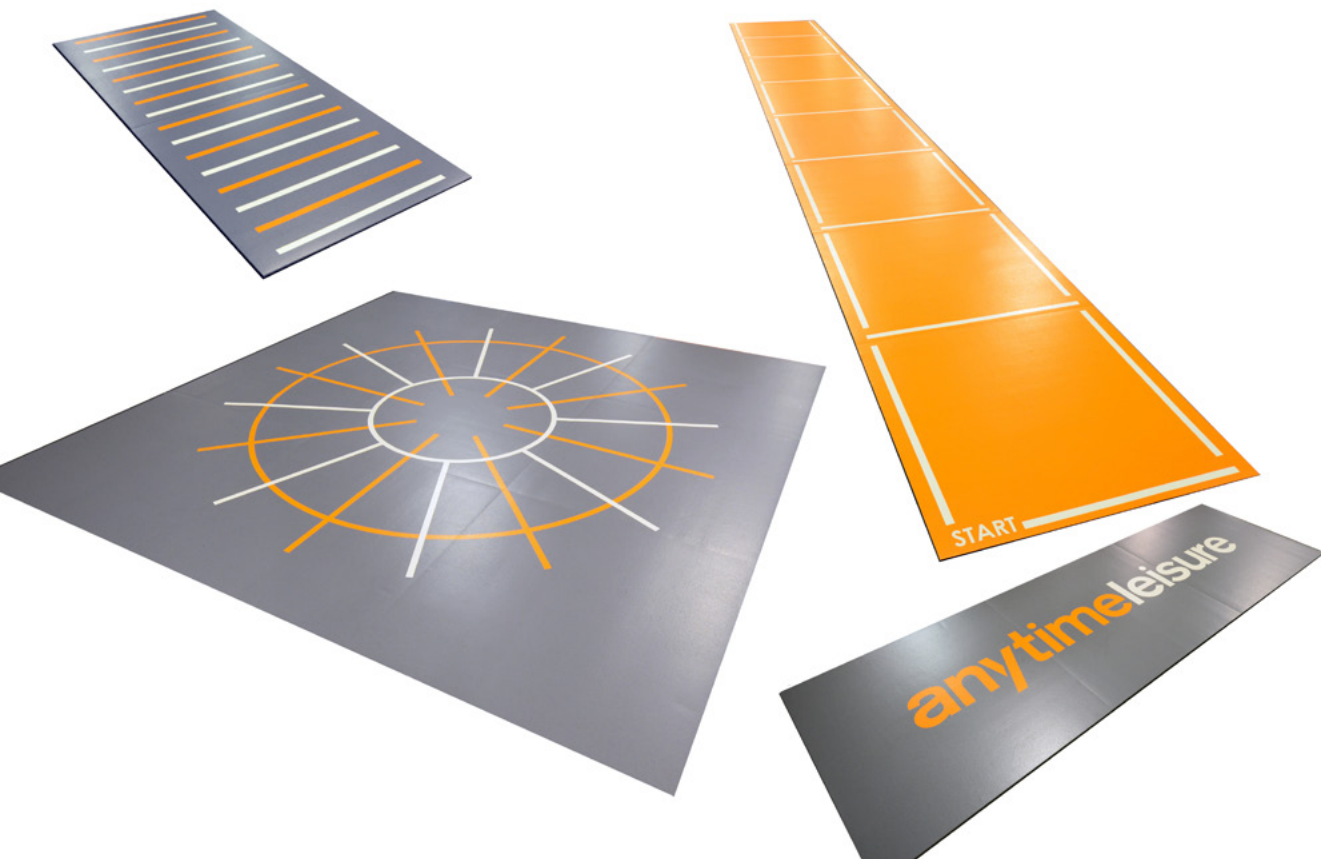
REHOUSE
www.rehouse.com



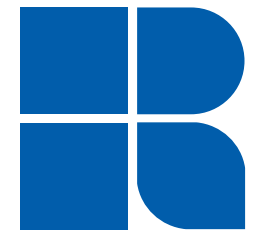
Bespoke by design.

Neoflex™ Duo Tiles with Graphics

- Add Graphics, Logos, Zones, or Functional Line Markings
- Sketch your own, or allow us to design it for you

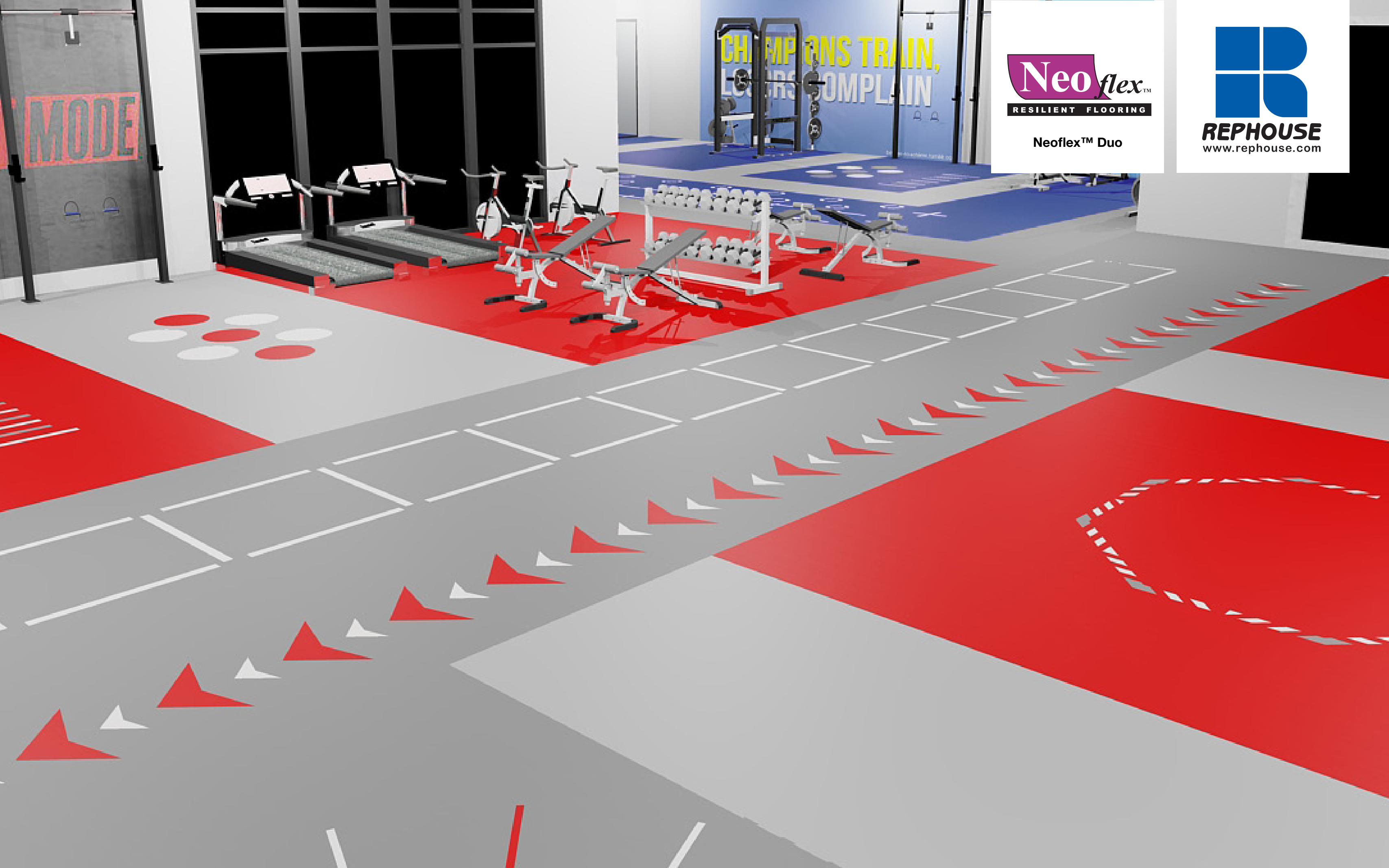


Neoflex Duo



REPHOUSE
www.rephouse.com

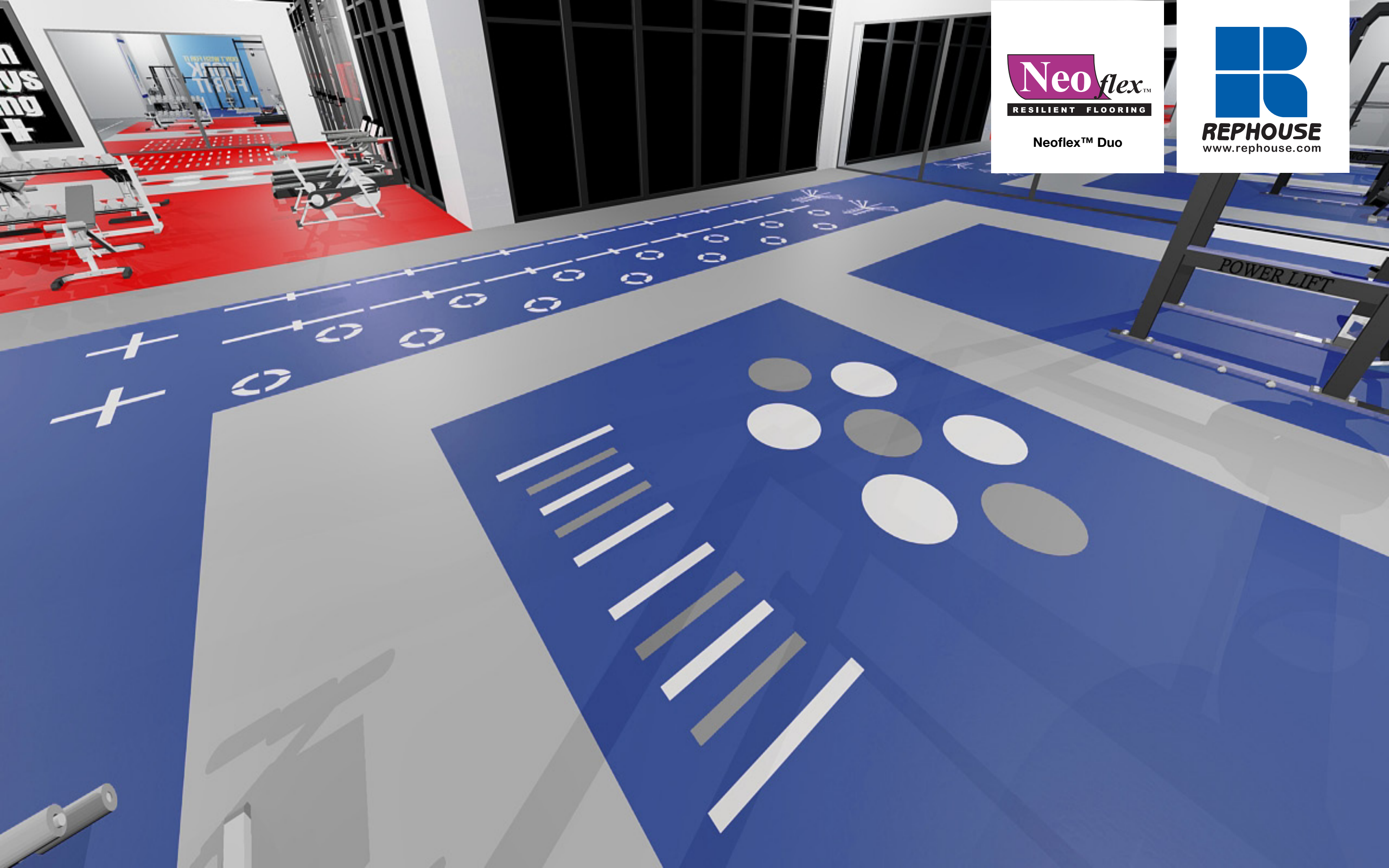




Neoflex™
RESILIENT FLOORING
Neoflex™ Duo



REPHOUSE
www.rephouse.com



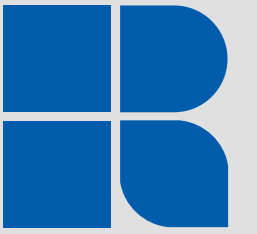
Neoflex™
RESILIENT FLOORING
Neoflex™ Duo



REPHOUSE
www.rephouse.com



Neoflex Duo

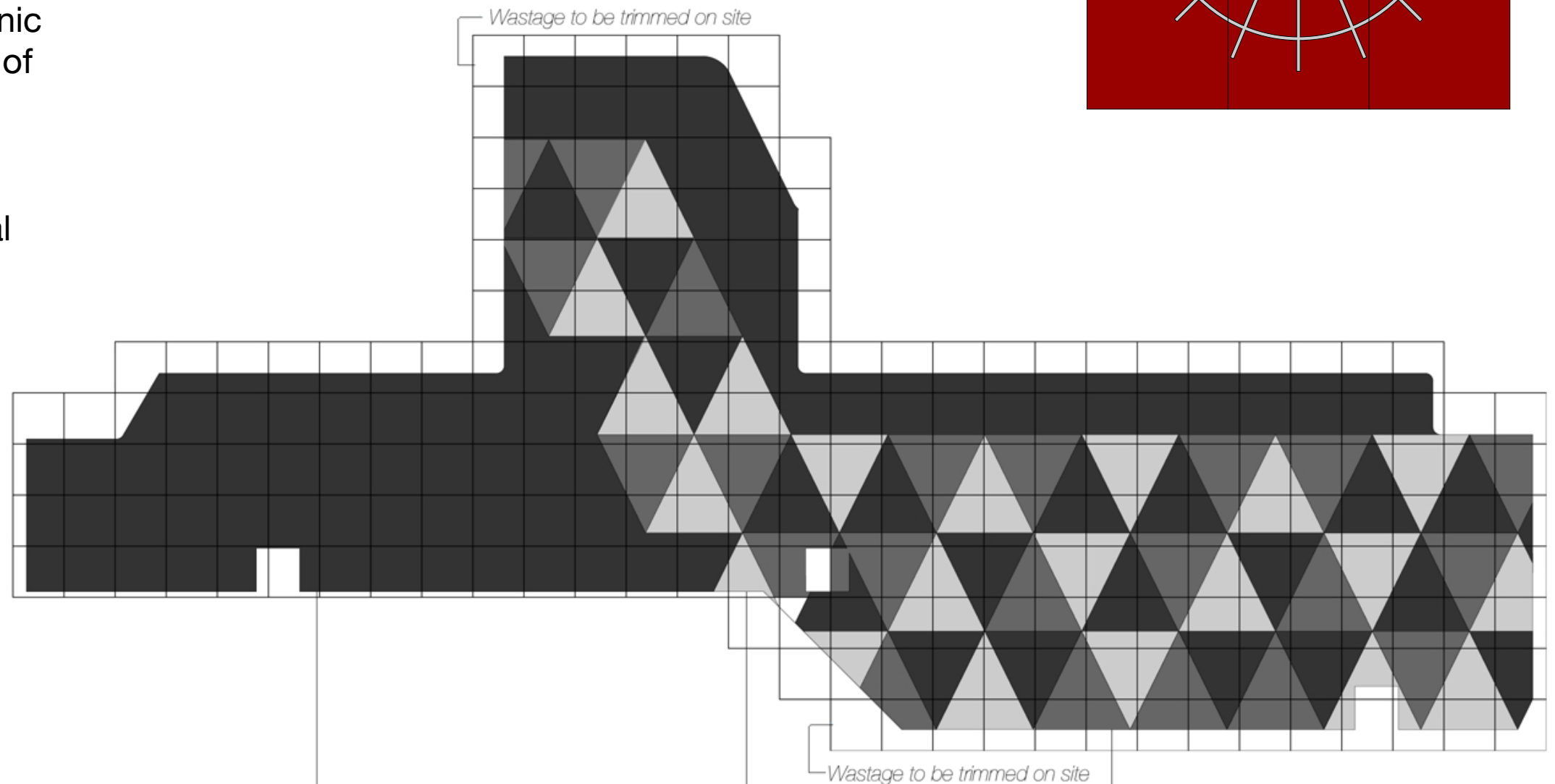
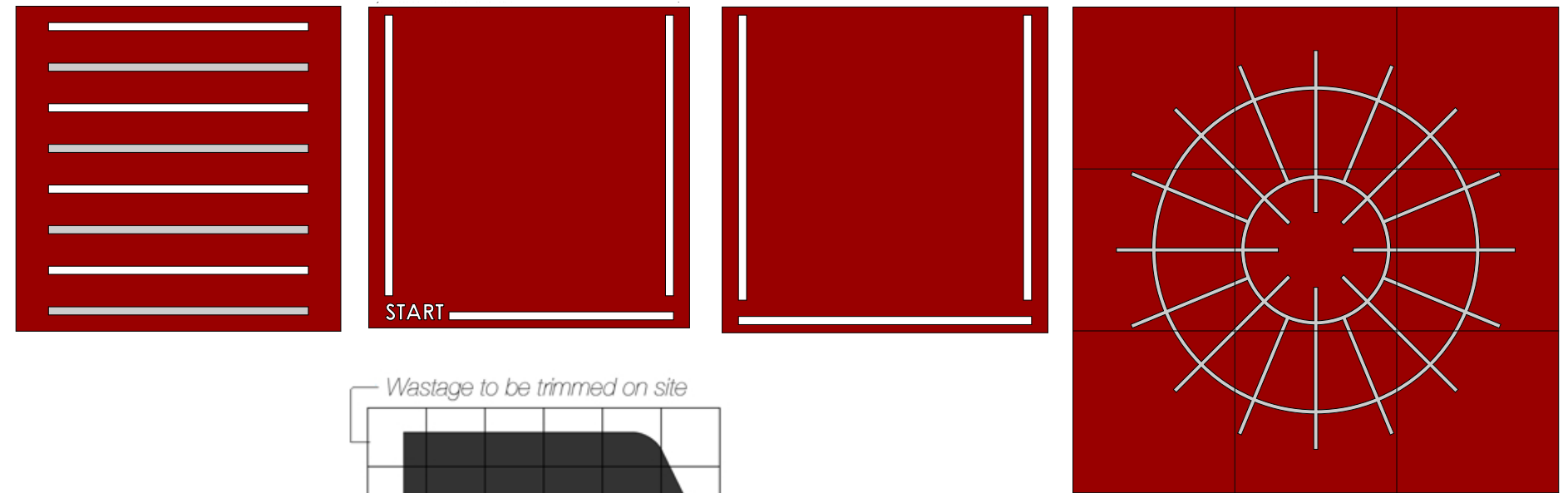


REPHOUSE
www.rephouse.com

But also simple by design.

Neoflex™ Duo Tiles with Graphics

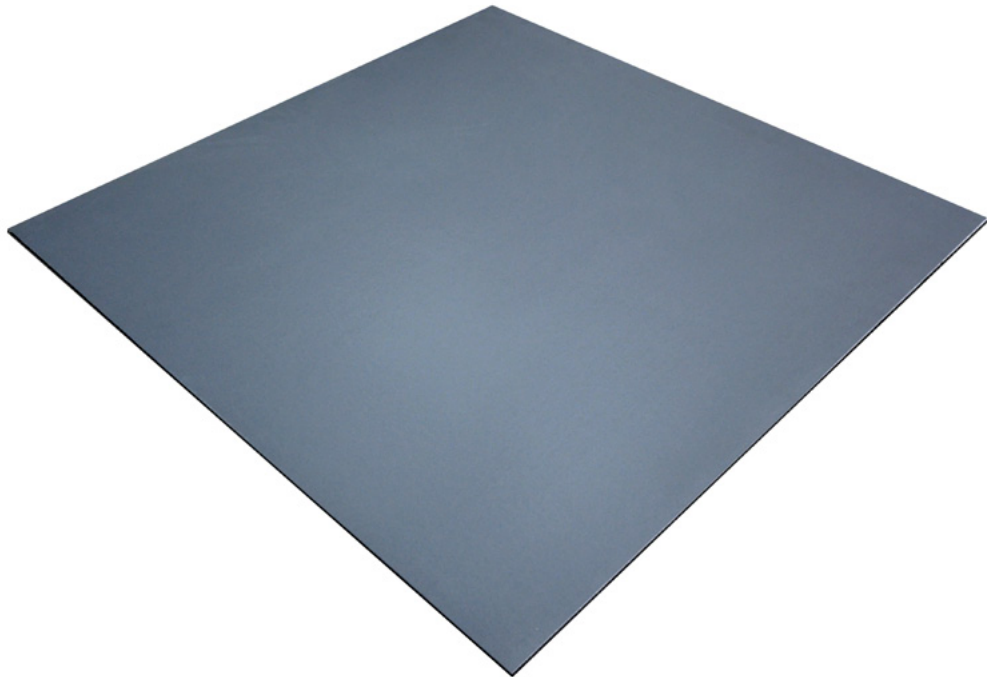
- Supplied as modular tiles
- Each tile is custom-made based on an electronic drawing, and precision cut to within a fraction of a millimeter
- Complexity of installation removed because Rephouse labels and organizes each individual tile
- Installation process is as easy as installing tiles in sequence, according to our personalized instructions



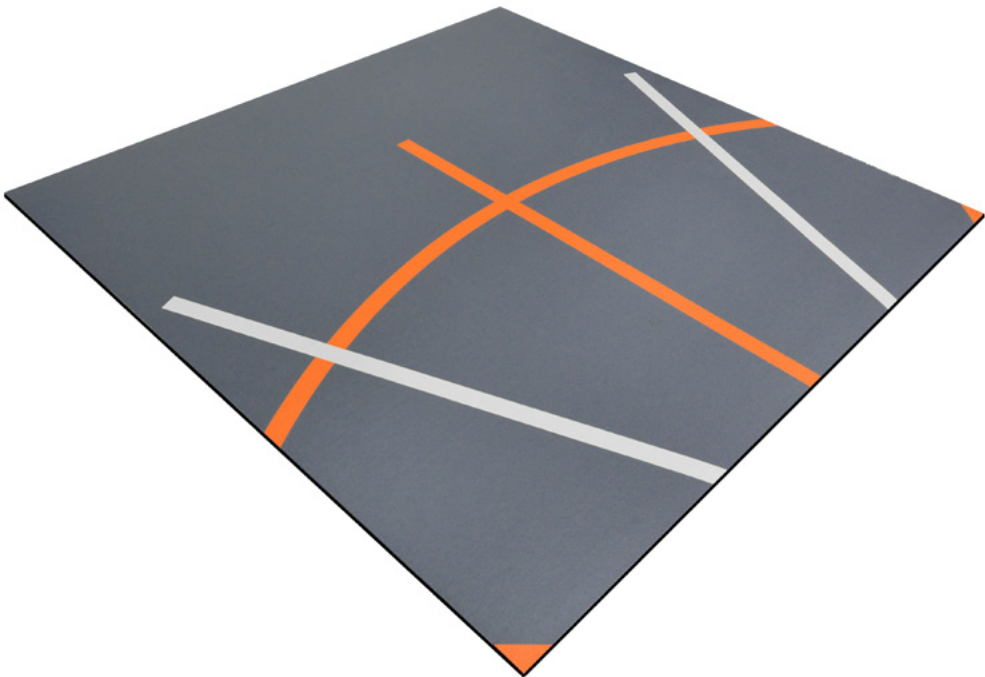


All in one, easily installed format.

Neoflex™ Duo Tiles are supplied in 1m x 1m tiles, that are easy to install.



without graphics



with graphics

Property	Standard	Result
Thickness		10 mm
Dimensions		1000 mm x 1000 mm
Weight		10.0 kgs
Hardness	ISO 7619-1:2010	62.1 ^º Shore A
Determination of Flexibility & Deflection	ISO 24344:2012	No cracking in either direction
Enhanced Slip Resistance	EN 13845:2005 Annex C	Moderate
Dynamic Coefficient of Friction	EN 13893:2022	0.7
Light Fastness	ISO 105-B02:2013	7-8 grade
Residual Indentation	ISO 24343-1:2002	0.18 mm
Dimensional Stability	ISO 239999:2012	0.5%
Flammability	EN 13501-1	Efl (Optional Cfl-s1)
Installation		Double sided tape or full bond